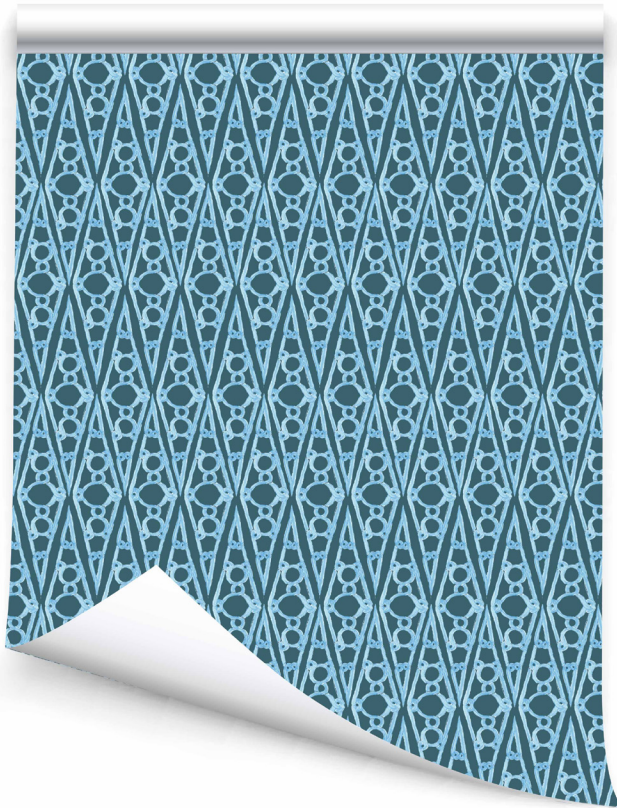


VILLA  
SKU: GC-236

VICTORIA LARSON



Villa started as a study of a ceiling detail at Villa Ephrussi de Rothschild in Cap Ferrat. The vaults are etched with a striking geometric design that is a modern contrast to the Baroque Salon of pink marble columns. Linking curves and circles form the most beautiful designs that reappeared in gates in neighboring estates. I knew I had to incorporate that feeling into a design.

Listing: Metallic Grasscloth

Length: By the Yard; 6-yard max. panel length

Width: 34" pre-trimmed

Sold by the yard; 6 yard max single panel length

Availability: 14 business days from order payment

SKU: WP-236

Colors: Delft, Harbor, Navy, Tortoise,  
Verdant, Sailor

Repeat: 34" H x 8" V

Match: Straight

Class A Fire-Rated

PVC Free

